



EN 316L Stainless Steel Water Pipes and Fittings



# VISION

---

InstaPressfit® envisions itself as a premier manufacturer\* in the pipes and fittings sector, distinguished by our commitment to excellence, trusted partnership and the delivery of cost-effective, high-quality products.

# MISSION

---

At InstaPressfit®, our mission is to set new benchmarks in the pipes and fittings industry by delivering cost-effective products that cater to a wide market segment. We achieve this through innovative, technically advanced production processes that prioritize quality, safety, hygiene and durability.



## From The CEO's Desk:

Dear Friends,

As a CEO of a leading Stainless-Steel pipes & fittings manufacturer company, I bring over two decades of proven success in guiding ventures and reshaping industry landscapes.

My expertise spans business development, management, team leadership, channel management and institutional sales. With a steadfast commitment to excellence, our company propel to new heights through strategic insights & dynamic relationships. Through a fusion of innovation and operational acumen, I lead our team in delivering unparalleled quality and service, ensuring our position as pioneers in the pipes and fittings sector.

Together, we forge pathways for sustainable growth while exceeding customer expectations as every turn.



**Nimit Varshney**

**Chief Executive Officer**

**Aaira India LLP.**

## Our Collaboration With Hisar Metal Industries Ltd.

At Insta Pressfit®, we are committed to delivering the highest-quality stainless steel pipes to our customers. To enhance our capabilities and ensure the superior quality of our products, we have partnered with **Hisar Metal Industries Ltd.**, one of the renowned steel manufacturers in India, since 1991. They have 35 years of experience in the steel industry. This collaboration allows us to leverage Hisar Metal's advanced manufacturing techniques and premium materials, ensuring that our stainless steel pipes meet the highest industry standards.

We have collaborated with Hisar Metal to produce best quality stainless steel pipes. Our combined expertise ensures that we stay at the forefront of the stainless steel plumbing industry, providing solutions that address our client's changing demands.

Get the quality that results from our partnership with Hisar Metal, and put your confidence in us for all of your stainless steel pipe needs.



*In pursuit of excellence*

[www.hisarmetal.com](http://www.hisarmetal.com)







**Suitable for drinking water as per IS 10500**

## Why InstaPressFit®

.....

**Safety :** EN 316L Stainless steel is an inert material. It is resistant to corrosion and will not react with toxic chemicals that sometimes seep into the ground. Furthermore, it prevents the growth of algae, fungus and is resistant to most bacteria. These qualities make EN 316L stainless steel the ideal material for pipes that contain drinking water.

**Hygiene :** The EN 316L stainless steel used for InstaPressfit® is of top quality. It is the same stable, high quality steel that is used in hospitals across the world in replacement surgeries. InstaPressfit® pipes, once installed, will last for decades and will deliver a consistent level of safety throughout without fear of scaling and bad odour.

**Quality & Innovation :** EN 316L Stainless steel has a high tensile strength. Pipes & fittings made from this material are of highest quality and last for decades. Our quality is our topmost priority. Our manufacturing processes and technology focus on making the joints resistant to damage even under high water pressure.

Our cleverly designed fittings can be installed by any plumber using our specially designed hydraulic crimping tools. The installation of our pipes & fittings is quick and hassle-free.

**Affordability :** We, at InstaPressfit®, believe that the benefits of our products far outweigh their cost. But to make them easily available and within reach of the Indian market, we have regulated the prices of our pipes & fittings.

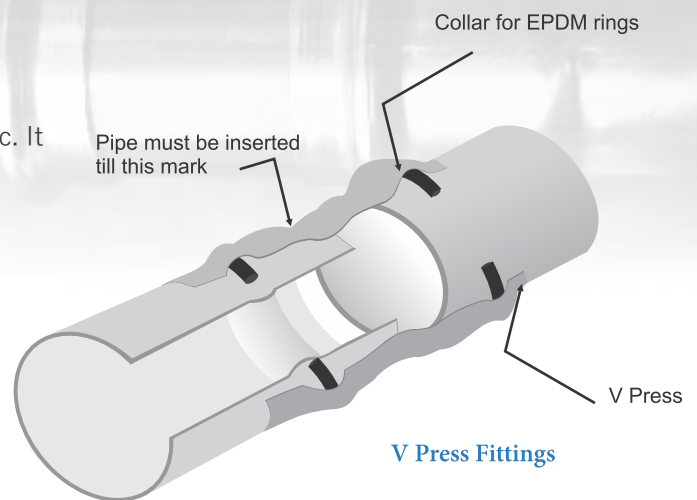
InstaPressfit® is not only revolutionary, but it is affordable too.





## InstaPressfit<sup>®</sup> EN 316L Stainless Steel Plumbing System

The integrated plumbing system consists of EN 316L stainless steel pipes & fittings for distribution of water in various segments namely residential, commercial, industrial etc. It is available in all normal sizes used in Indian Market.



## Insta Uncrimped Fitting Indicator (IUFI) Technology



FINISHED TO PERFECTION



Use high speed blade to cut the pipe.

1

Cut the pipe in round shape.

2

The edges of pipe should be smooth to prevent damage to the gasket.

3

Pipe should be inserted till the end of the fitting.

4

Keep the fitting collar in the middle point of certified crimping tool.

5

Press the certified crimping tool till both face of tool jaw.

6

Look at the IUF Inducator

7

## Easy to Install

### Crimping Tool

Height : 203mm

Length : 395 mm

Width : 81 mm

Weight : 3 kg

Compression Range : 54mm



*\* Maximum chloride level upto 1000 ppm Maximum free chlorine upto 2ppm*



Pipe & Fitting Range

Pipe Size	Pipe Outer Diameter (MM)	Pipe Wall Thickness (MM)
1/2"	15	1.00
3/4"	22	1.20
1"	28	1.20
1 1/4"	35	1.50
1 1/2"	42	1.50
2"	54	1.50
2 1/2"	76.10	2.00
3"	88.90	2.00

\* Pipe as per EN 10312

EPDM details for Water Plumbing

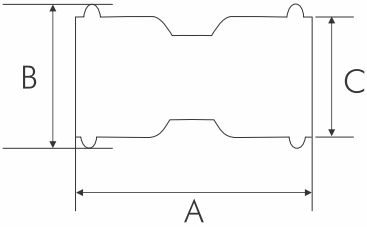
Material	Percentage	Function
EPDM Rubber	32.00%	
Fillier (Calcium Carbonate)	16.00%	Stabilize, avoid D-shaper of rubber
Reinforce (N330, N550)	31.20%	Provide crack resistance
Softener (Paraffine Oil No.-300)	15.20%	Avoiding penetration due to moisture
Accelerator	01.12%	Provide high physical property
Vulcanizer	00.64%	Provide weather resistance and ageing resistance
Other	03.84%	To give shape
Total	100.00%	

Other O-Ring Details

Material	Colour	Temp.	Function	Usage
Fluoronrubber	Brown	-30°C -170°C	16	Steam high temperature hot water
HNBR	Yellow	-40°C -150°C	16	Gas Fuel Oil

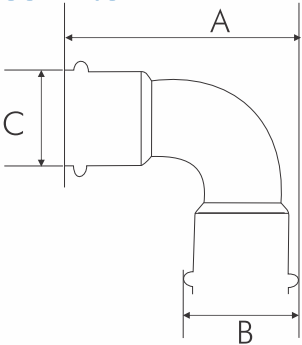
NOTE: In case of special requirements please specify in purchase order

Socket



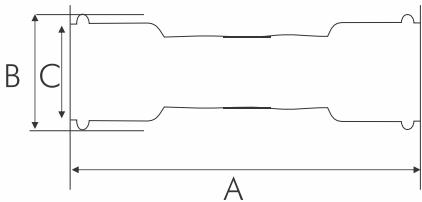
Size	A	B	C
1/2"	53.50	23.00	18.50
3/4"	57.40	31.40	25.70
1"	58.50	37.40	31.60
1 1/4"	67.50	44.60	38.80
1 1/2"	78.30	53.40	45.70
2"	92.40	65.50	58.00

A 90° Elbow



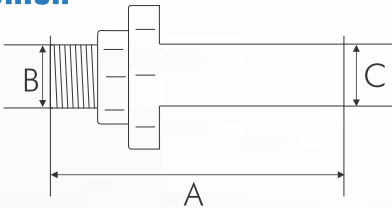
Size	A	B	C
1/2"	55.00	23.00	18.50
3/4"	77.00	31.40	25.70
1"	92.00	37.40	31.60
1 1/4"	109.00	44.60	38.80
1 1/2"	142.00	53.40	45.70
2"	175.00	65.50	58.00

Slip Socket



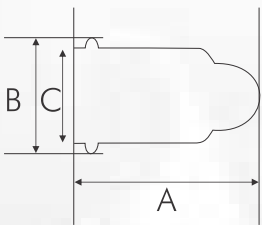
Size	A	B	C
1/2"	79.50	23.00	18.50
3/4"	87.50	31.40	25.70
1"	100.00	37.40	31.60
1 1/2"	119.00	44.60	38.80

Union



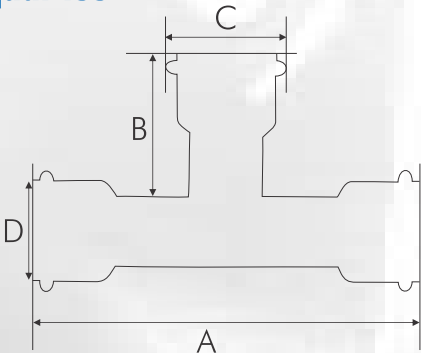
Size	A	B	C
1/2"	120.50	21.00	15.00
3/4"	143.00	26.00	22.00
1"	150.00	33.00	28.00
1 1/4"	159.00	41.00	35.00
1 1/2"	163.00	47.00	42.00
2"	168.00	59.50	54.00

Cap



Size	A	B	C
1/2"	49.00	23.00	18.50
3/4"	38.00	31.40	25.70
1"	40.00	37.40	31.60
1 1/4"	44.60	44.60	38.80
1 1/2"	54.00	53.40	45.70
2"	62.00	65.50	58.00

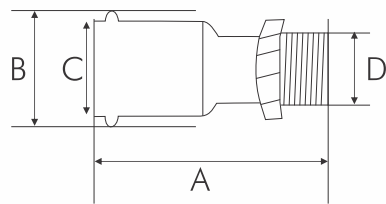
Equal Tee



Size	A	B	C	D
1/2"	82.60	37.50	23.00	18.50
3/4"	88.20	41.00	31.40	25.70
1"	100.00	40.80	37.40	31.60
1 1/4"	117.60	43.80	44.60	38.80
1 1/2"	139.80	50.70	53.40	45.70
2"	184.00	54.00	65.50	58.00

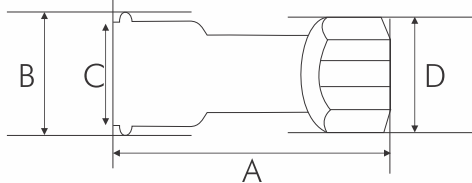


Male Adaptor



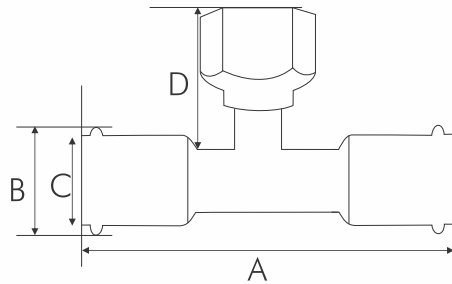
Size	A	B	C	D
1/2"	53.00	23.00	18.50	21.00
3/4"	55.50	31.40	25.70	26.00
1"	61.20	37.40	31.60	33.00
1 1/4"	80.00	44.60	38.80	41.50
1 1/2"	80.00	53.40	45.70	47.00
2"	94.50	65.50	58.00	59.50

Female Adaptor



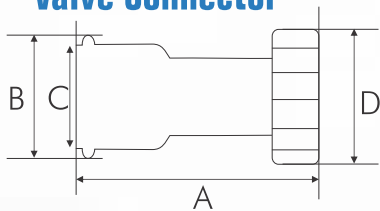
Size	A	B	C	D
1/2"	48.80	23.00	18.50	27.60
3/4"	67.30	31.40	25.70	34.20
1"	58.00	37.40	31.60	41.20
1 1/4"	75.60	44.60	38.80	57.60
1 1/2"	77.50	53.40	45.70	68.60
2"	102.00	65.50	58.00	80.50

Branch Tee Female Outlet



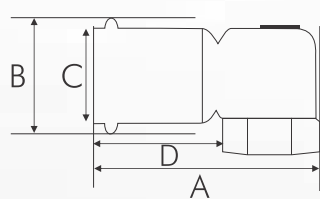
Size	A	B	C	D
1/2"	82.20	23.00	18.50	24.00
3/4"	88.20	31.40	25.70	33.20
1"	99.80	37.40	31.60	32.80

Valve Connector



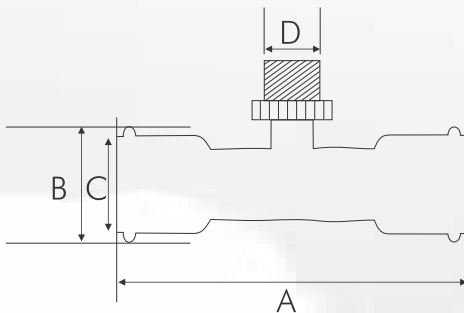
Size	A	B	C	D
1/2"	57.40	23.00	18.50	28.20
3/4"	53.50	31.40	25.70	34.50
1"	59.00	37.40	31.60	41.00
1 1/4"	67.70	44.60	38.80	51.00
20 1/2"	64.70	31.40	25.70	28.00

90° Female Elbow Short



Size	A	B	C	D
1/2"	63.70	23.00	18.50	34.00
3/4"	63.00	31.40	25.70	35.00
1"	83.00	37.40	31.60	40.00

Branch Tee Male Outlet



Size	A	B	C	D
1/2"	81.50	23.00	18.50	26.00
3/4"	90.20	31.40	25.70	34.00
1"	99.80	37.40	31.60	35.00
20 1/2"	88.00	31.40	25.70	31.00

\*These sizes are for reference purposes only, may differ batch to batch.

# Comparison of Various Plumbing Materials

Parameter	GI	PPR	CPVC	COMPOSITE	COPPER	S.S	Why SS is better
Corrosion Resistance	1	5	5	5	4	5	Stainless Steel grades EN 316L have better corrosion resistance. Even copper has Green corrosion of Copper Sulphate which is poisonous.
Hygiene	1	3	3	4	4	5	"Food Grade, Recommended for Drinking water, Food & Pharma equipment"
Maintenance Free Life	1	3	2	1	3	5	Minimum replacement costs
Enhances Building Life	1	3	3	1	4	5	Negligible leakage, hence least damage to building
Strength of Pipes	4	2	1	1	3	5	Stainless Steel is the strongest among competing materials
Ease of Installation	2	2	3	3	2	5	Fast installation with low skill worker
Earthquake Proof	3	2	2	5	3	5	Withstands the vibrations and shocks due to its ductile nature
Cleanability	1	2	2	2	4	5	Lowest deposit buildup due to smooth surface
Food Grade	1	2	2	2	4	5	Meets all food grade standards
High Temperature Application	3	1	1	1	4	5	Retains strength at high temperature
Low Temperature Application	3	1	1	1	3	5	Is not brittle at low temperature, unlike Plastic or G.I
Fire Resistant	4	1	1	1	3	5	Withstands High Temperature
Experience of Usage	5	1	1	1	5	5	Worldwide usage experience of 30-40 years
Outside Painting Required	1	5	5	5	5	5	No need of Painting
Deposition of Algae	2	1	1	2	3	5	Smooth surface prevents algae buildup
Blockage Problem	1	2	2	2	4	5	No deposit buildup hence no blockage
Damage due to Drilling	4	1	1	1	4	5	Strongest material doesn't get damaged due to drilling
High Flow Rate of Water	2	3	3	2	3	5	Smooth and Wear resistant at High Flow rate
Low Roughness (less scaling)	1	3	3	2	4	5	Smooth surface prevents deposition
Usage in Public Building	1	1	1	1	2	5	Strong material not easily gets damaged
Wear Resistant	1	1	1	1	1	5	Not effected by sand or high flow rate
Joint Assurance System	3	1	1	1	2	5	"No welding or Solution joining. Permanent Mechanical joint checked for each joint by gauge"
Saves Pumping Energy	1	3	3	2	4	5	Smooth surface need less electricity
Water Quality affect	1	5	5	5	4	5	No change in water quality during storage
Pressure Rating	3	2	1	1	3	5	Highest design pressure rating of 25 bar
Joint Strength	2	1	1	1	2	5	Press fit joint has fool proof and high strength joint
Application Range	3	2	2	2	4	5	Used for Air, Water & many Gases
Less conduiting (Jhiri) Requirement	2	1	1	3	3	5	As pipe dia is less
High Wall Strength	3	1	1	3	3	5	Less Brick cutting for piping retains its strength
Saving in Labour Cost	1	4	5	5	1	5	Fast installation with low skill worker
Saving in Installation Time	1	3	3	5	1	5	Fast to install (approx 1/3rd time of G.I Piping)
Application in High Rise Building	3	2	2	2	4	5	Not affected by Vibration and Wind Speeds
Reduces Space requirement Shafts	2	1	1	2	3	5	Since lower dia is possible, saving in Shaft sizes possible
Life Cycle Cost	1	3	3	1	4	5	Lowest life cycle cost
Equivalent ID (NB sizes shown)	1/2"	1"	1"	1"	1/2"	1/2"	1/2" Plastics are commonly denoted by OD sizes
Low Diameter possible (eg. OD)	3/4"	1"	1"	1"	1/2"	1/2"	1/2" High flow rates, less deposits, allow for use of low diameter
Cost Index (G.I = 100%),incl. Labour	100	90	80	110	200	140	Slightly more than G.I and others
Total 5* Ratings	1	3	4	6	2	34	Highest rating in most parameters

# Products



Pipe



Slip Socket



90° Female Elbow



Male Thread Socket



Female Thread Socket



90° Male Elbow



A90° Elbow



Pipe Bridge



45° Elbow



90° Female Elbow (Short)



Equal Tee



Union



Branch Tee Male



Reducing Socket



Socket



Cap



**AAIRA INDIA LLP**

+91-9811305500

E-mail : [info@instapressfit.com](mailto:info@instapressfit.com)

Find us at : [www.instapressfit.com](http://www.instapressfit.com)

Delhi Office : 11, Khasra No. 91/26-28-29, Alipur, New Delhi - 110036

U.P Office : 1st Floor, Plot No. 59/2/20, Site 4, Sahibabad, Ghaziabad, U.P.-201005



*In pursuit of excellence*

[www.hisarmetal.com](http://www.hisarmetal.com)

